

Apartment House

公寓住宅

Bulduru Prospekts, Jurmala, Riga, Latvia
呆杜魯 普羅斯佩克特，丘馬拉，里加，拉脫維亞

Gmp - Architekten von gerkan, Marg und Partner

The site's unique location on the boundary of the Latvian seaside resort of Jurmala allows for a life in the country with wonderful views over the surrounding landscape. In direct proximity to the beach of the Baltic Sea and located amidst old trees, the apartment house appears like "a white pearl in the forest".

The voluminous geometric sculpture unifies interior and outdoor space, architecture and garden landscape into a comprehensive whole. Boundaries between interior and exterior disappear due to the interaction of form and space. Walls dissolve into "frames", the exterior space penetrates the differentiated building in the form of loggias and terraces.

The building's geometry is based on the layering of the circular form and orthogonal structure. The white plastered surfaces, characterizing the building's appearance, are contrasted with the large window openings. Lattice frames, projections and recesses as well as terraces with stain-

less steel balustrades divide the building.

The house comprises seven freehold flats on three levels with a penthouse apartment on the top floor. All seven apartments differ regarding their design and orientation towards the surrounding landscape. Underground car park and swimming pool are located in the basement, with the pool being naturally lit from the adjoining garden.

The quality equipment meets the highest demands. All apartments have generous living and dining areas and are partially designed as maisonettes over two levels. The floors are finished with beech tree parquet respectively screed floors in the living area, with granite in kitchen and bathroom. Grey and blue tones define the design of interior walls, single carmine wall surfaces place some emphasis. The built-in units in the bathroom and kitchen are made from wood respectively stainless steel. Swiss pear wood was used for doors and fitted wardrobes.

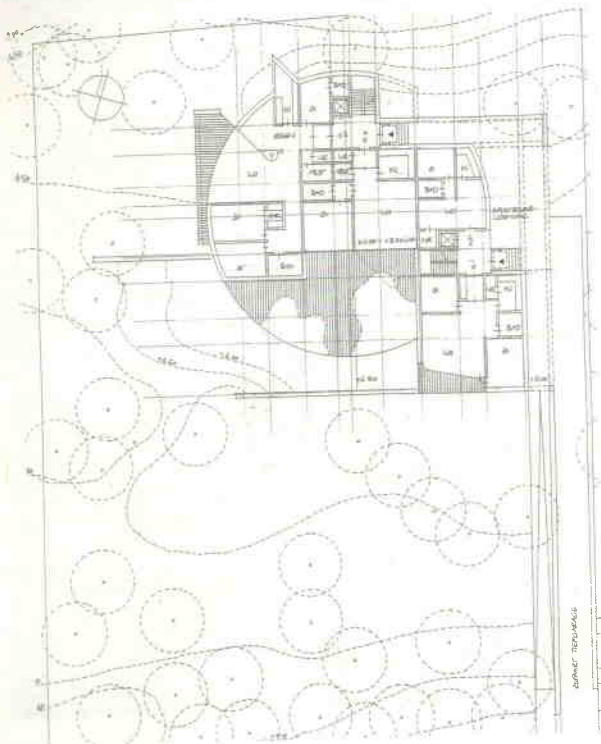
基地的位置很特別，是在拉脫維亞邊界上的濱海度假勝地——丘馬拉，擁有整個周圍景觀的視野，能讓人在此享受鄉村生活。在往波羅的海海濱的方向，這間公寓住宅就像“樹林裡的白色珍珠”一般，座落在老樹之間。

室內和室外空間、建築和花園景觀統合成一個整體，就像個龐大的幾何形雕刻。在造型和空間的交互作用下，室內、外之間的界線因而消失。牆壁解體成“框架”，室外空間以涼廊和陽台的形式，貫穿了這棟建築物，使它產生了變化。

這棟建築物有著圓形的平面格局和矩形的結構。塗上灰泥的白色表面和大開窗形成對比，成為這棟建築的外觀特色。窗花框架和有不銹鋼欄杆的陽台所形成的投影和退縮，分割了這棟建築物。

這棟住宅由七間分別位在三層樓的自有公寓和頂樓一間有閣樓的公寓所組成。所有七間寓所，對周圍環境景觀的設計和方位都不同。地下汽車停車場和游泳池在地下室，游泳池和花園相連著。

這些有品質的設備是為了符合最高的需求。所有的寓所都有一般的起居空間和餐廳，其中一些被設計成兩層樓。起居處的整片樓板鋪上了山毛櫸木條鑲花地板，而廚房和浴室則鋪上花崗石。以灰色和藍色調定義室內牆面的設計，而強調了一道深紅色的牆面。浴室和廚房中和結構相連的單元，分別由木頭和不銹鋼製成。門和衣櫥則是用瑞士梨木。[翻譯 黃北宏]



地面層平面圖 / Ground floor plan

1 這間座落在老樹中的公寓 / The apartment house located amidst old trees.

LOCATION: Bulduru Prospekts, Jurmala, Riga, Latvia
CLIENT: Firm Vincents, Riga
ARCHITECT: Gmp - Architekten von gerkan, Marg und Partner
DESIGN: Meinhard von Gerkan
PROJECT TEAM, DESIGN: Volkmar Sievers, Brigitte Queck, Oliver Christ
CONSTRUCTION FIRM: Vincents, Riga
GROSS FLOOR AREA: 2,147 m²
VOLUME: 6,116 m³
CONSTRUCTION PERIOD: 1999 - 2001

案址: 保杜魯 普羅斯佩克特, 丘馬拉, 里加, 拉脫維亞
業主: Firm Vincents, Riga
建築師: Gmp - Architekten von gerkan, Marg und Partner
專案設計師: Meinhard von Gerkan
設計群: Volkmar Sievers, Brigitte Queck, Oliver Christ
建築工程: Vincents, Riga
總樓地板面積: 2,147 m²
容積: 6,116 m³
施工期間: 1999 - 2001



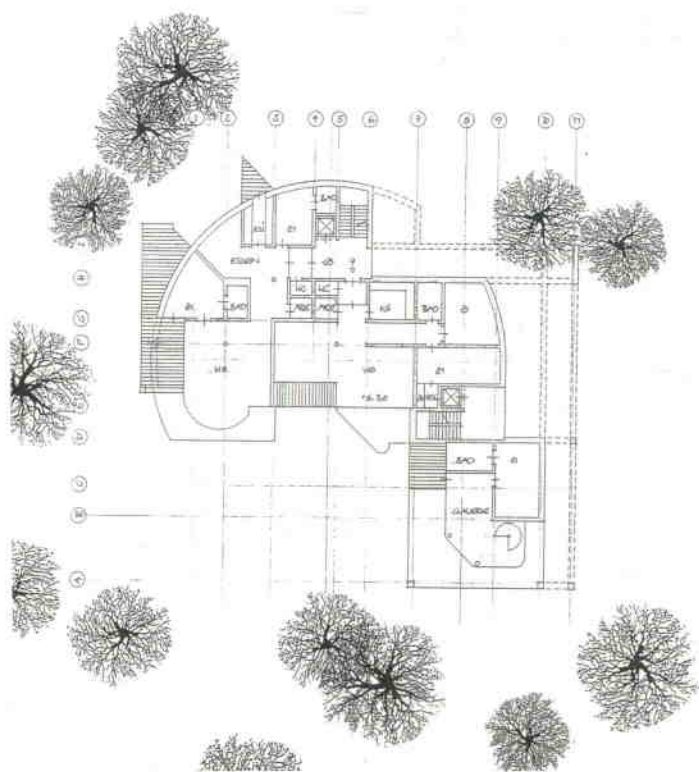


2 牆壁解體成“框架” / Walls dissolve into “frames”.

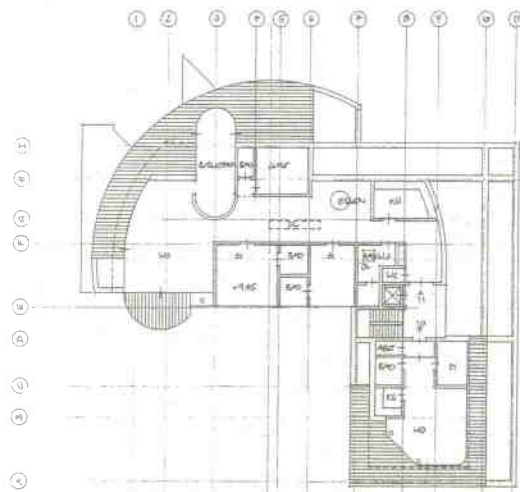
3 塗上灰泥的白色表面和大開窗形成對比，成為這棟建築的外觀特色。 / The white plastered surfaces, characterizing the building's appearance, are contrasted with the large window openings.



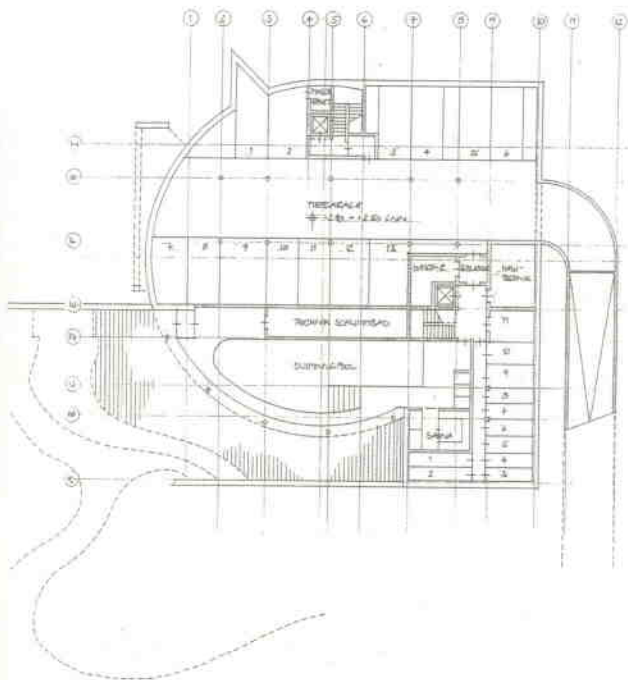
三樓平面圖 / 3F plan



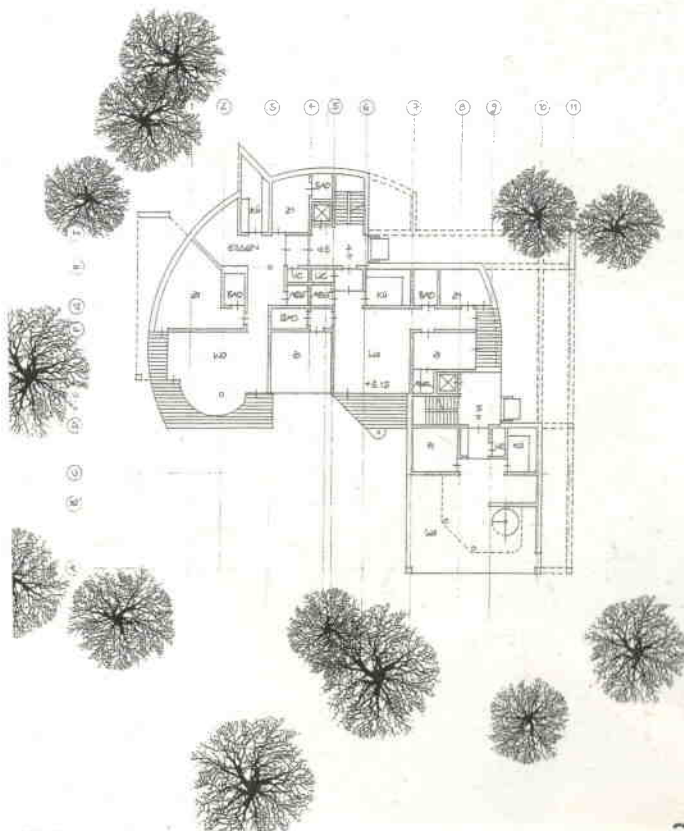
頂樓平面圖 / Top floor plan



地下室平面圖 / Basement plan



二樓平面圖 / 2F plan





- 4 所有的寓所都有一般的起居空間和餐廳，其中一些被設計成兩層樓。 / All apartments have generous living and dining areas and are partially designed as maisonettes over two levels.
- 5 露台 / Terrace
- 6 以灰色調定義室內牆面的設計 / Grey tone define the design of interior walls.
- 7 游泳池 / Swimming pool
- 8 浴室 / Bathroom

剖面圖 / Section

